

Manor ISD - Manor New Tech Middle School
Manor, Texas

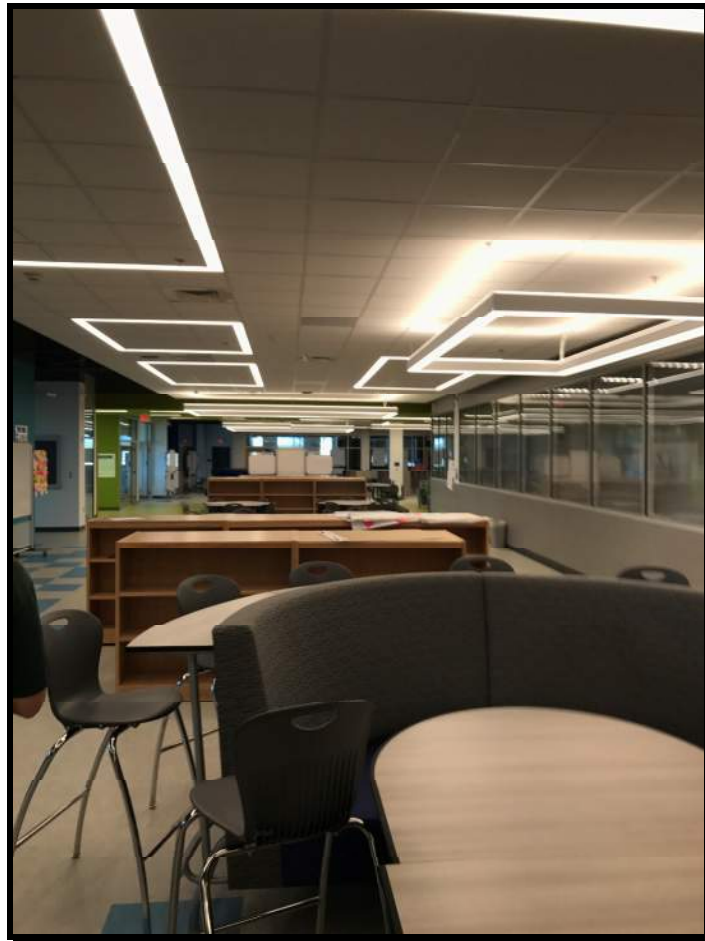
Description: Mechanical, Electrical and Plumbing design for complete new Middle School. Daiken VRF for 3-story classroom wing (200 tons). Package RTU for big box spaces (150 tons). Dedicated outside air machines (150 Tons), complete LED lighting, power monitoring.

Square Feet: 136,604
Construction Value: \$26,583,333
Completion Date: 2017
Client: Manor ISD



- MEP/ENERGY CONSULTANTS
- COMMISSIONING
- FIELD INVESTIGATIONS

Manor ISD - Manor New Tech Middle School - Continued



- MEP/ENERGY CONSULTANTS
- COMMISSIONING
- FIELD INVESTIGATIONS

Manor ISD - Manor Sr. High School & Field House

Manor, Texas

Description: Mechanical, Electrical and Plumbing design for complete new High School. Daiken VRF for 3-story classroom wing (200 tons). Package RTU for big box spaces (380 tons). Dedicated outside air machines (145 Tons), complete LED lighting, power monitoring.

Square Feet: HS - 201,704, Field House - 18,442
Construction Value: \$42,000,000 - High School \$5,000,000 - Field House
Completion Date: Summer 2018
Client: Manor ISD



- MEP/ENERGY CONSULTANTS
- COMMISSIONING
- FIELD INVESTIGATIONS

Manor ISD - Manor Sr. High School & Field House - Continued



- MEP/ENERGY CONSULTANTS
- COMMISSIONING
- FIELD INVESTIGATIONS

Temple ISD – Temple High School CATE (Career and Technology Addition) Temple, Texas

Description: Mechanical, Electrical and Plumbing design for complete two-story CATE Addition. Daiken VRF for 1st story (75 tons). Package RTU for 2nd story (176 tons) saved square footage by avoiding duct chases. Dedicated outside air machines (100 Tons), complete LED lighting, power monitoring.

Square Feet: 110,258
Construction Value: \$31,000,000
Completion Date: 2018
Client: Temple ISD



- MEP/ENERGY CONSULTANTS
- COMMISSIONING
- FIELD INVESTIGATIONS

Temple ISD - Administration Center

Temple, Texas

Description: MEP design for new 3 floor administration center. Mitsubishi VRF mechanical system (160 tons) with packaged dedicated outside air (32 tons).

Square Feet: 50,266

Construction Value: \$10,325,089

Completion Date: 2018

Client: Temple ISD



- MEP/ENERGY CONSULTANTS
- COMMISSIONING
- FIELD INVESTIGATIONS

Temple - Santa Fe Business Center

Temple, Texas

Description: MEP design for two-story office building. Mitsubishi VRF mechanical system (102 tons) with packaged dedicated outside air (30 tons).

Square Feet: 33,972

Construction Value: \$7,046,240

Completion Date: 2018

Client: Economic Development Corporation



- MEP/ENERGY CONSULTANTS
- COMMISSIONING
- FIELD INVESTIGATIONS

Lakeway Police Headquarters

Lakeway, Texas

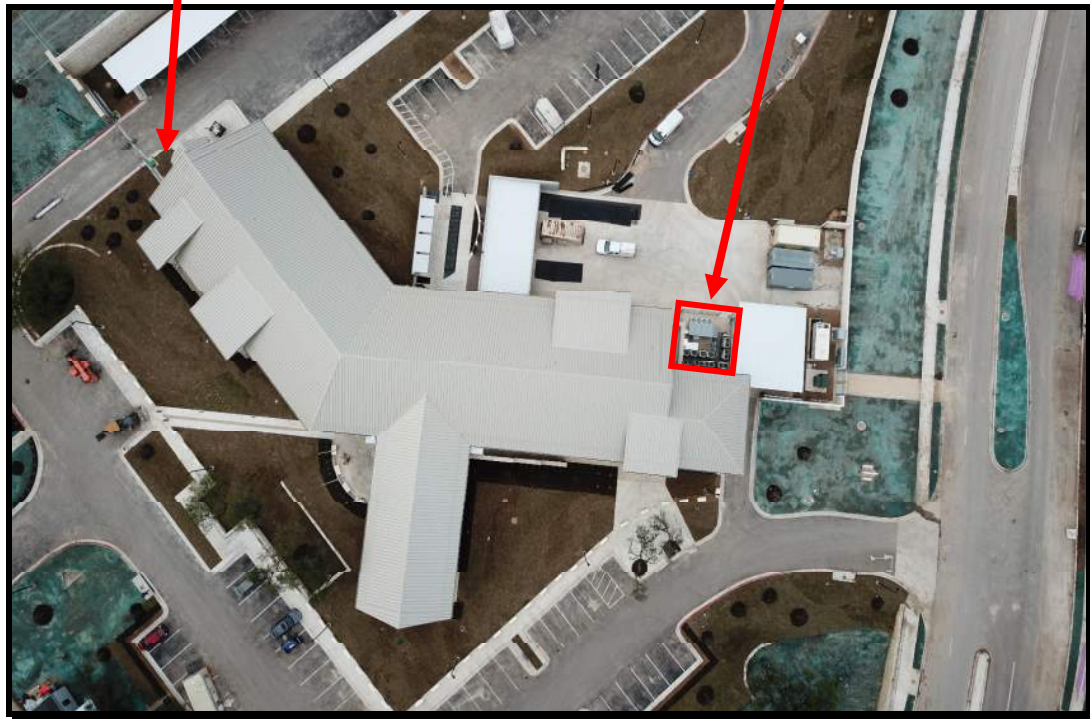
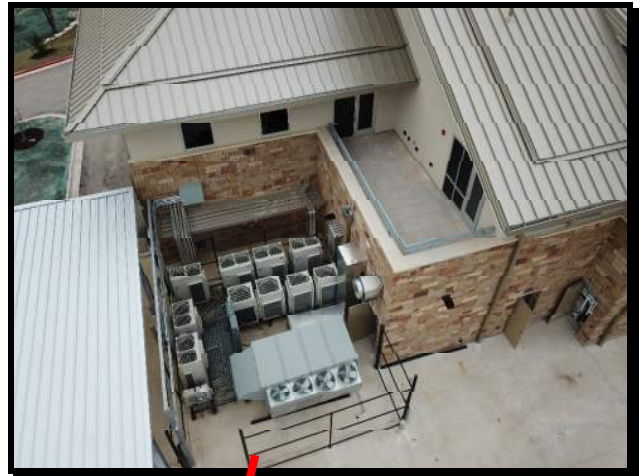
Description: MEP design for new police headquarters. Daikin VRF for complete building HVAC (150 tons). Dedicated outside air (32 tons).

Square Feet: 32,123

Construction Value: \$18,071,827

Completion Date: March 2019

Client: City of Lakeway



- MEP/ENERGY CONSULTANTS
- COMMISSIONING
- FIELD INVESTIGATIONS

Lakeway Police Headquarters – Continued



- MEP/ENERGY CONSULTANTS
- COMMISSIONING
- FIELD INVESTIGATIONS